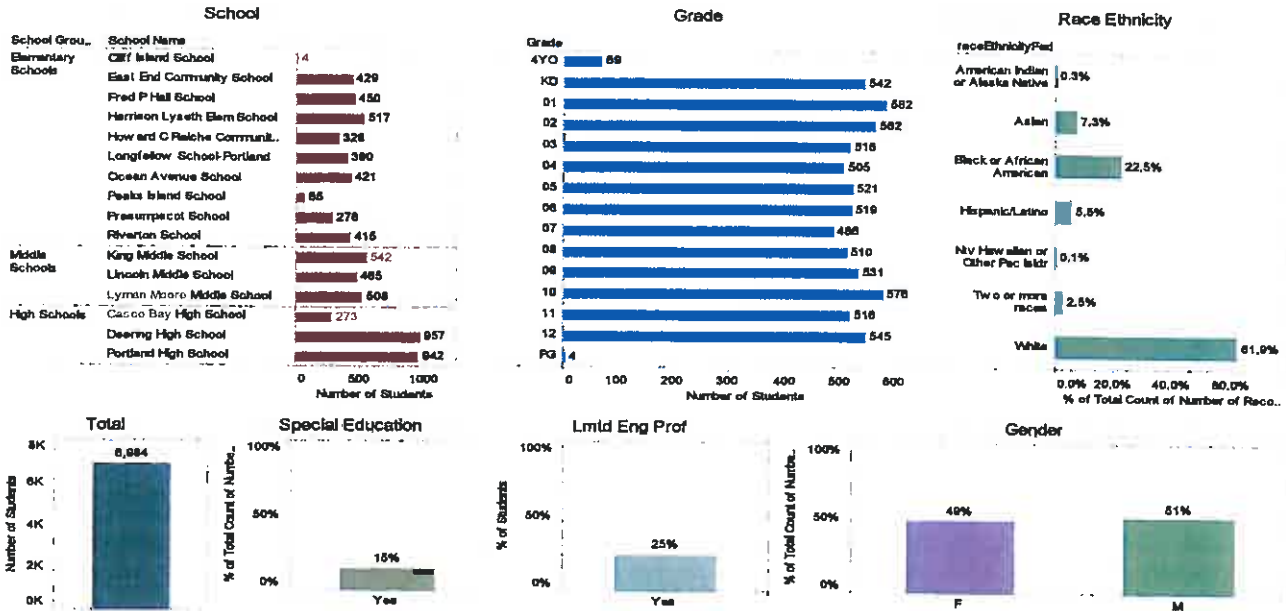
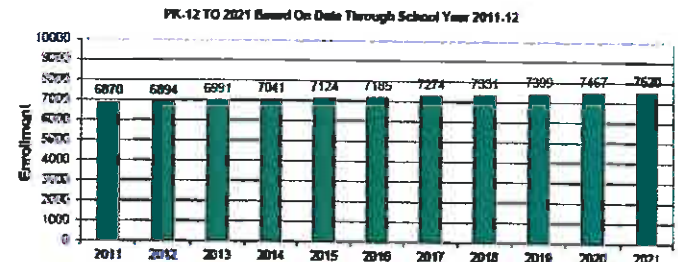


STUDENT DEMOGRAPHICS



- The Portland Public Schools had nearly 7000 students enrolled in pre-kindergarten through grade 12 as of February 2012.
- Fifty-four percent of students qualify for free and reduced lunch.
- The Maine Department of Education reports the following graduation rates for 2010-2011, the most recent year available: Deering High School – 83.84%; Portland High School – 74.81%; Casco Bay High School – 76.56%. When the Portland Public Schools incorporates data for graduation after the fifth year of high school enrollment, graduation rates rise by about 5 percent.
- Portland's public high schools report that the following percentage of their 2011 graduates went on to postsecondary education: Deering High School - 78%; Portland High School - 74%; Casco Bay High School - 84%.
- The 2011 graduates of the Portland Public Schools are attending 131 colleges and postsecondary programs, including Ivy League universities, technical institutes, art schools and a wide range of other institutions. They include Harvard University, Columbia University, University of Maine, Johns Hopkins University, Bowdoin College, Rochester Institute of Technology and Prague Film School. A list of colleges and other postsecondary schools attended by 2011 graduates can be found at <http://www2.portlandschools.org/colleges>.
- During the 2010-2011 school year, 4,664 adults attended Portland Adult Education, including 1593 students in academic classes, 986 students in job skills classes and 2249 students in enrichment classes.
- The Portland Public Schools employs 1,243 people.
- Students in the Portland Public Schools speak approximately 60 languages in their homes. The top language groups, by numbers, are: English (69.3%), Somali (11.3%), Arabic (4.4%), Spanish (3.0%), Khmer (2.0%), Vietnamese (1.6%), French (1.5%), Acholi (1.5%), Kinyarwanda (0.7%), Swahili (0.6%) and Persian (0.6%).

Portland, ME Projected Enrollment



CITY OF PORTLAND DEMOGRAPHICS

Portland has a high percentage of high school and college graduates while at the same time having a lower than average (compared to both the state and nation) median household income. The number of families living below the poverty line is higher in Portland than the rest of Maine and the country.

CITY OF PORTLAND EDUCATION AND ECONOMIC CHARACTERISTICS	Portland	Maine	U.S.
High school graduate or higher	90.8%	89.4%	84.6%
Bachelor's degree or higher	41.2%	26.1%	27.5%
Median household income (2009 inflation-adjusted dollars)	\$43,601	\$46,541	\$51,425
Families below federal poverty level	12.0%	8.6%	9.9%



Recent Awards

Maine Teacher of the Year 2012 semifinalist (Paige Fournier, Lyman Moore Middle School)

NAACP Portland Branch award (Lyman Moore Middle School, 2012)

HealthierUS School Challenge Bronze Award (East End, Hall, Longfellow, Ocean Avenue, Peaks Island, Presumpscot, Reiche and Riverton schools, 2011)

Finalist in the 2011 MetLife/NASSP National Principal of the Year award program (King Middle School Principal Michael McCarthy)

Western Maine Class A sportsmanship awards (Deering High School boys' basketball team and Portland High School girls' hockey team, 2011)

Named by the International Center for Leadership in Education as one of 25 "model schools" nationwide (Casco Bay High School, 2010)

"I Love My Librarian" 2010 national award winner (Kelley McDaniel, King Middle School)

Teacher of the Year award from the Kids in Need Foundation (Sally Reagan, Portland High teacher, 2010)

Maine 2010 Middle Level Principal of the Year (King Middle School Principal Michael McCarthy)

Maine Teacher of the Year 2010 Finalist (Jayne Quinn Sawtelle, Hall Elementary School)

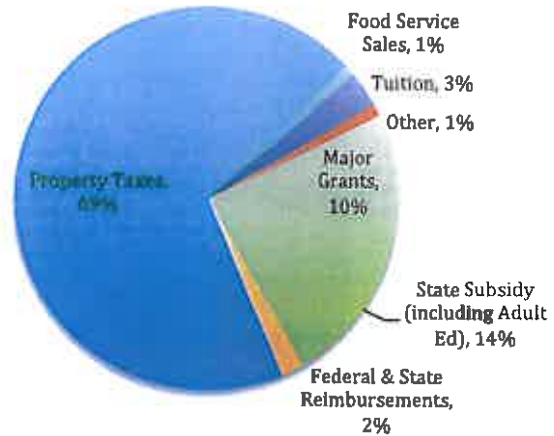
Maine Teacher of the Year 2010 Semi-Finalist (Thomas Fournier, Lincoln Middle School)

Best overall portfolio award at the Project Citizen State Showcase (Moore Middle School, 2010)

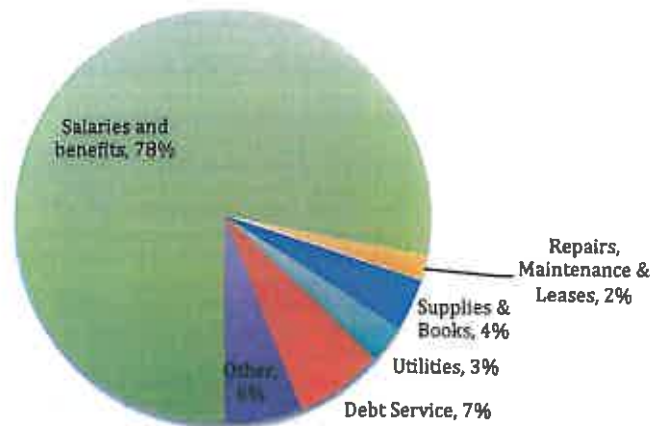
eco-excellence award for preserving local ecology, Portland Arts and Technology High School carpentry program (2010)

FINANCIAL DATA

FY12 Budgeted Local & Major Grant Revenues (including Federal Jobs Bill Grant)



FY12 Budgeted Expenditures



Many Hands ...

Portland High students worked with Mihku Paul, a Native American poet and teaching artist, to make this mural as part of an exploration of American Indian art motifs and landscape elements using natural materials.



Throughout this document you'll see examples of other student artwork projects, as well as student activities that have happened in the past.

ASSESSMENT DATA

Summary of New England Common Assessment Program (NECAP) Results For Grades 3-8

The figures below indicate the percentage of students who met or exceeded the standards.

The targets (tgt) indicate Maine's "No Child Left Behind" benchmarks.

Reading Results

Math Results

	Fall 09 (tgt=66%)	Fall 10 (tgt=75%)	Fall 11 (tgt=83%)		Fall 09 (tgt=60%)	Fall 10 (tgt=70%)	Fall 11 (tgt=80%)
District (3-8)	67%	66%	69%	District (3-8)	54%	54%	58%
East End	41%	44%	57%	East End	21%	25%	44%
Hall	77%	73%	71%	Hall	65%	60%	59%
Longfellow	78%	81%	82%	Longfellow	70%	76%	77%
Lyseth	84%	82%	78%	Lyseth	74%	68%	68%
Peaks	94%	81%	80%	Peaks	90%	73%	83%
Presumpscot	72%	64%	62%	Presumpscot	46%	50%	53%
Reiche	55%	64%	62%	Reiche	45%	53%	52%
Riverton	47%	37%	52%	Riverton	33%	37%	44%

Nathan Clifford and Ocean Avenue elementary schools were not included because there was not three years of data.

	Fall 09 (tgt=66%)	Fall 10 (tgt=75%)	Fall 11 (tgt=83%)		Fall 09 (tgt=60%)	Fall 10 (tgt=70%)	Fall 11 (tgt=80%)
District (3-8)	67%	66%	69%	District (3-8)	54%	54%	58%
King	77%	73%	78%	King	65%	56%	62%
Lincoln	62%	62%	69%	Lincoln	50%	51%	53%
Moore	67%	71%	71%	Moore	49%	52%	56%

These results show that the two Portland elementary schools with School Improvement Grants – Riverton and East End Community School – have made significant progress in reading and math over the past three years.

2009-2011 Cumulative New England Common Assessment Program (NECAP) Scores and 2009-2010 Cumulative Maine High School Assessment (MHSA) Scores: Percent of Students Meeting or Exceeding Standards

	3 rd Grade NECAP			5 th Grade NECAP			8 th Grade NECAP			11 th Grade MHSA		
	Rdg	Mth	Wrt	Rdg	Mth	Wrt*	Rdg	Mth	Wrt*	Rdg	Mth	Wrt
Portland	64%	55%	-	70%	57%	47%	72%	55%	55%	48%	40%	46%
Maine	71%	63%	-	70%	62%	42%	72%	60%	52%	50%	49%	45%

*Writing scores were available for 2010-2011 only.



Portland Board of Education

At Large Representatives

Sarah J. Thompson, 2012
 83 Starbird Rd.
 Portland ME 04102
 (h) 761-9275 / thompsa@portlandschools.org

Jaimey R. Caron, 2013
 19 Old Barn Lane
 Portland ME 04103
 (h) 878-0942 / caronj@portlandschools.org

Kathleen Snyder, 2013
 31 Kenwood St.
 Portland ME 04102
 (h) 828-0711 / snydek@portlandschools.org

Elizabeth Holton, 2014
 18 Victoria St.
 Portland ME 04103
 (h) 653-6584 / holtoe@portlandschools.org

District 1
 Jenna Vendil, 2012
 36 Vesper St., #3
 Portland ME 04101
 (h) 518-8044 / vendij@portlandschools.org

District 2
 Edward Bryan, 2012
 9 Cushman St.
 Portland ME 04102
 (h) 871-0917 / bryaned@portlandschools.org

District 3
 Laurie Davis, 2013
 134 Oakdale St.
 Portland ME 04102
 (h) 838-5201 / davisl@portlandschools.org

District 4
 Justin Costa, 2014
 11 Sawyer St.
 Portland ME 04103
 (h) 522-2004 / costaj@portlandschools.org

District 5
 Marnie Morrione, 2014
 51 Fuller St.
 Portland ME 04103
 (h) 773-9859 / morrima@portlandschools.org

Student Representatives
 Deering High School: Shaina Lam
 2012
 874-8100 / lamsha@portlandschools.org

Portland High School: Chip Weber
 2012
 874-8100 / weberc@portlandschools.org

Casco Bay High School: Zev Bliss,
 2012
 874-8100 / blissz@portlandschools.org



Vision: All learners will be fully prepared to participate and succeed in a diverse and ever-changing world.

Mission: The Portland Public Schools are responsible for ensuring a challenging, relevant, and joyful education that empowers every learner to make a difference in the world. We build relationships among families, educators, and the community to promote the healthy development and academic achievement of every learner.

Core Principles

- We support an organization that strives for continuous improvement and transparency, with agreed upon goals and evidence of progress.
- We support an organization where leadership at all levels supports student learning, financial, and operational priorities.
- We support an organization that demonstrates fiscal responsibility and effective long-term financial planning.
- We support an organization that provides our learners with equitable and appropriate facilities.
- We support an organization that celebrates and partners with the diverse culture of our community.
- We support an organization that has an investment in staff recognizing that this connects to student learning.
- We support an organization that is vested in our Adult Learners. support an organization that recognizes the importance of the arts, athletics, co-curricular, and extra-curricular opportunities in our learners' growth.
- We support an organization that utilizes technology to provide instructional opportunities for all of our learners.

School / Department	Phone	Principal
Central Office	874-8100	
Cliff Island Elementary	766-2885	Cindy Nilsen
East End Community	874-8228	Marcia Gendron
Hall Elementary	874-8205	Kelly Hasson
Longfellow Elementary	874-8195	Dawn Carrigan
Lyseth Elementary	874-8215	Lenore Williams
Ocean Ave Elementary	874-8180	Beverly Coursey
Peaks Island Elementary	766-2528	Cindy Nilsen
Presumpscot Elementary	874-8220	Cynthia Loring
Reiche Elementary	874-8175	Christine Keegan (teacher leader) Kevin Brewster (teacher leader)
Riverton Elementary	874-8210	Jeanne Malia
King Middle	874-8140	Mike McCarthy
Lincoln Middle	874-8145	Steve Nolan
Moore Middle	874-8150	Steve Rogers (interim)
Portland High	874-8250	Deborah Migneault
Deering High	874-8260	Ira Waltz
Casco Bay High	874-8160	Derek Pierce
PATHS	874-8165	Michael Johnson
West	874-8225	Erin Frazier (Program Director)
Portland Adult Education (Riverton)	775-0432	Rob Wood (Director)
Portland Adult Education (West)	874-8155	Rob Wood (Director)
Multilingual Center	874-8135	Grace Valenzuela (Director)
Transportation	874-8240	Kevin Mallory (Director)
Food Services	874-8231	Ron Adams (Director)